

WAUKESHA METALS BAR STOCK

Corrosion Resistant • Anti-galling • Nickel Base • Copper Base

Waukesha Foundry has earned a reputation as an innovator in the production of anti-galling bar stock for a variety of industries. Our line of corrosion-resistant, nickel- and copper-base alloys works in contact with stainless steel, Inconel[®], Monel[®], chromium plate and many other metals without galling or seizing. These unique alloys are used in applications where daily cleaning or sterilization is required and the use of lubricants is prohibited. Each of our anti-galling alloys has distinct characteristics to meet the requirements of specific applications, including:

- ▶ Food processing equipment
- ▶ Nuclear valves
- ▶ Gears, bushings and bearings
- ▶ Quick-snap couplings
- ▶ Transfer car nut/bolt
- ▶ Pistons
- ▶ Pharmaceutical processing pumps
- ▶ Longer lasting parts as compared to stainless steel
- ▶ Approved with food contact

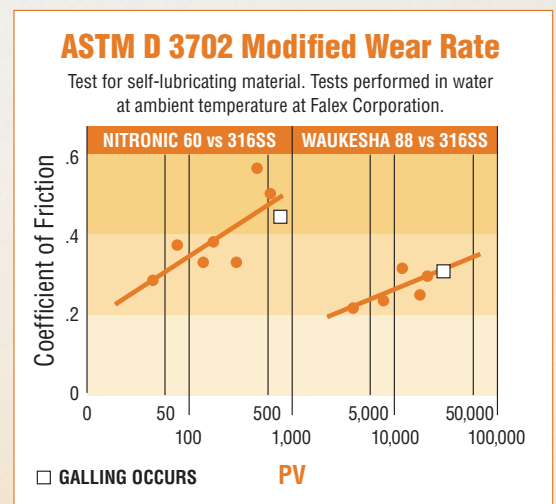
We conduct extensive testing on the corrosive effect of chemicals and food products on high-alloy materials and understand that conditions such as temperature variations, bearing load, mating materials, the type of product contacting the casting and operating speed are all factors in determining the right alloy for your application.

Waukesha Metal 88 – Offers good strength and superior corrosion resistance. This proprietary alloy can be used at low and high temperatures, is ideal for use wherever close clearance with moving parts is required and can be machined with or without coolant. WM88 has low thermal conductivity and requires careful tool selection. Gall testing is performed on-site and results are available upon request.

Waukesha Metal 23BI – This anti-galling alloy has higher yield strength and hardness than our standard WM88. These characteristics help maintain a sharper edge on blades and similar components. It offers good corrosion resistance and can be used at low and high temperatures. It is readily castable and machinable.

Waukesha Metal 126 – Developed for use in meat processing plants for form plates, plungers and vane pumps, WM126 is also well suited for gears, bushings and bearings. This copper base, anti-galling alloy offers good strength and corrosion resistance and can be used at low and high temperatures. **Note:** WM126 is not an Ni-base alloy.

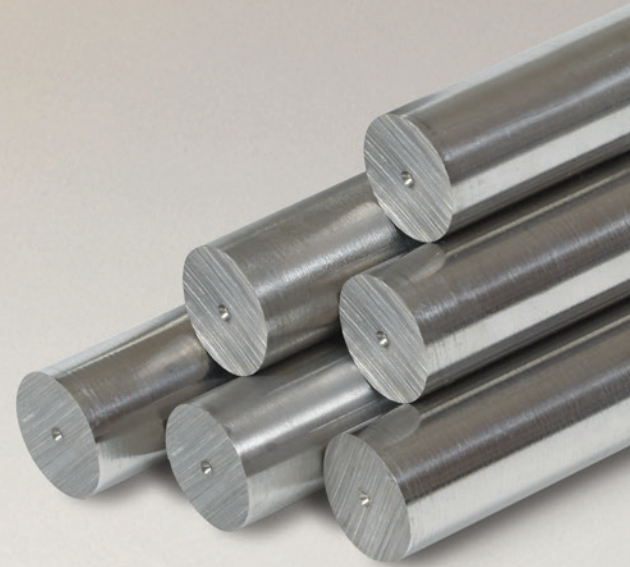
Waukesha Metal 3 – Specially formulated for excellent strength and corrosion resistance, this alloy has a copper base and can be used at low and high temperatures.



IN-STOCK STANDARD SIZES

If you have a tight turnaround, we have the solution. We offer a full complement of standard sizes in-stock and ready to ship. Use the following chart as reference for in-stock sizes (call or visit our website for pricing).

SIZES	WM88	WM126
3/4" x 6"	✓	
1" x 6"	✓	
1" x 12"		✓
1-1/4" x 12"	✓	✓
1-1/2" x 12"	✓	✓
1-3/4" x 12"	✓	✓
2" x 12"	✓	✓
2-1/4" x 12"	✓	✓
2-1/2" x 12"	✓	✓
2-3/4" x 12"	✓	✓
3" x 12"	✓	✓
3-1/4" x 12"	✓	✓
3-1/2" x 12"	✓	✓
3-3/4" x 12"		✓
4" x 12"	✓	✓
4-1/2" x 12"	✓	✓
5" x 12"		✓
5-1/2" x 12"		✓
6" x 12"		✓
1-1/4" x 15"	✓	



WM88 Buy Back Program

This program is a tremendous value to our customers. Since WM88 is a Waukesha Foundry proprietary alloy, we have the ability to recycle this material; therefore, we can buy back used rotors, plugs, drop offs and machine-segregated chips at highly competitive rates (substantially more than scrap prices). **Note: Minimum quantities required.**

CUSTOM ORDERS

Don't see the size you need in stock? Simply let us know what your requirements are and we will custom manufacture bar stock to fill your order. We can also produce to near net shape for your custom designs.

Although we can produce whatever custom size you need for any of our alloys, following are the most common custom sizes ordered for WM88:

- ▶ 2-1/4" x 77" ▶ 5" x 12" ▶ 5-1/2" x 12" ▶ 6-1/4" x 12"
- ▶ 3-1/2" x 72" ▶ 5-1/4" x 12" ▶ 6" x 12"

Please reference the Waukesha Foundry Food Processing Equipment Brochure for more information.

Customer satisfaction is important to us. To find out what Waukesha Foundry can do for you, please call us or visit our website at: www.waukeshafoundry.com



WUKESHA FOUNDRY, INC.
 1300 Lincoln Avenue • Waukesha, WI 53186 USA
 Tel + 1 800 727 0741 or + 1 262 542 0741
 Fax + 1 262 549 8440
 E-Mail info@waukeshafoundry.com
www.waukeshafoundry.com

©2023 Waukesha Foundry, Inc. All Rights Reserved. Printed in USA.
 Invar, Monel and Inconel are trademarks of their respective owners.

